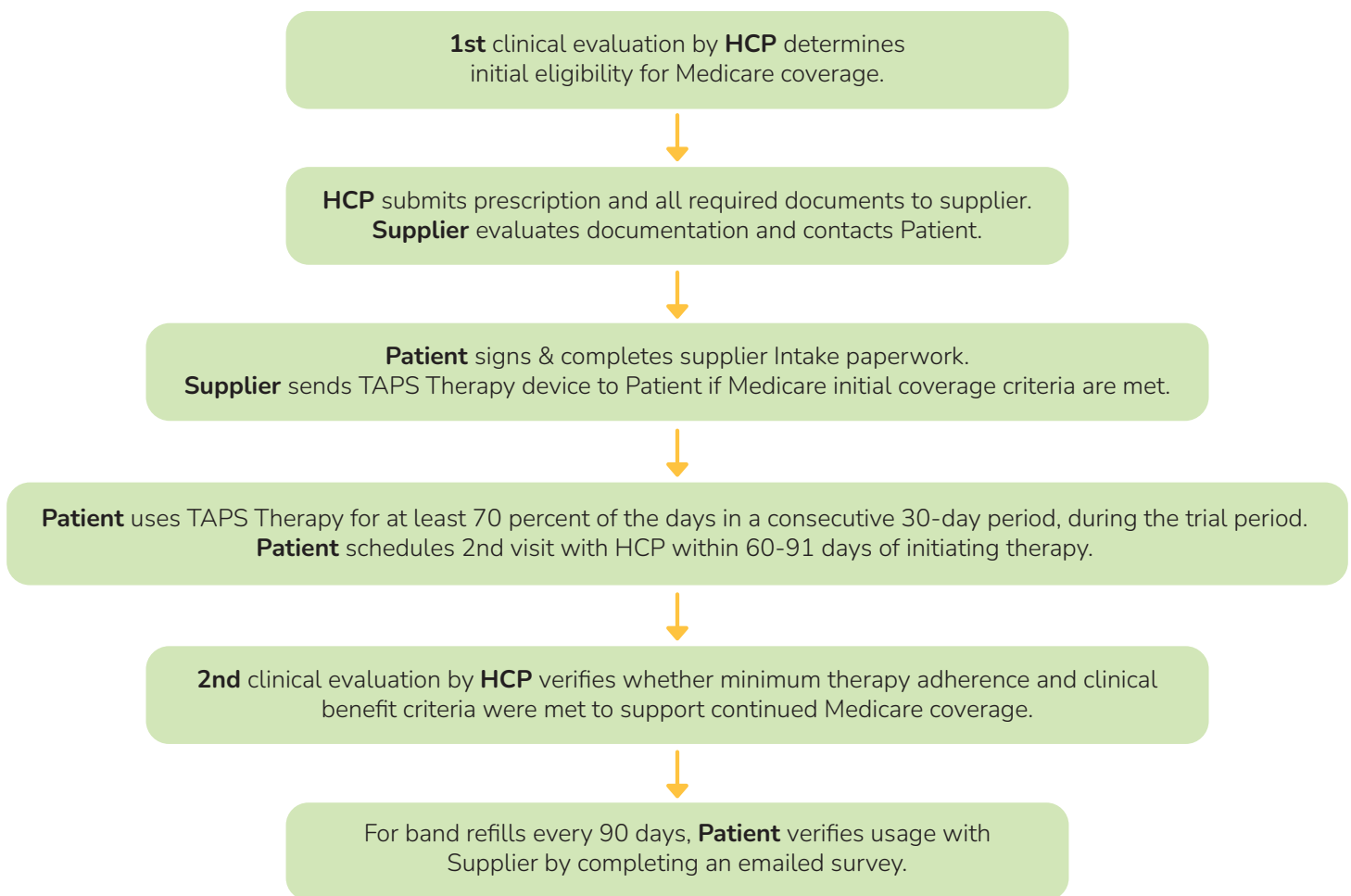




## Access to TAPS Therapy for Medicare Beneficiaries with Essential Tremor (ET)

If you are a Medicare beneficiary with essential tremor (ET), Medicare may provide coverage for a TAPS Therapy device, such as the Cala kIQ™, to relieve your hand tremors. Patients must meet Medicare coverage criteria (refer to Local Coverage Determination LCD L39591 for specific details).<sup>1</sup>

To qualify for Medicare coverage, your health care practitioner (HCP) must assess your eligibility for TAPS Therapy during an initial visit AND after a short trial period with the TAPS Therapy device.



Customer Care 888-699-1009 | [Reimbursement@CalaHealth.com](mailto:Reimbursement@CalaHealth.com)

<sup>1</sup> It is the responsibility of your treating HCP to determine and document the appropriate diagnoses and symptoms related to your condition. There is no guarantee that the use of any information provided in this document will result in coverage or payment by any third-party payor. Cala provides this information as a courtesy, but coverage requirements for Medicare or any other third-party payor are subject to change and interpretation. Cala does not guarantee third-party coverage or payment for any items or services.

**Indications for Use:** Cala kIQ is indicated to aid in the temporary relief of hand tremors in the treated hand following stimulation in adults with essential tremor. Cala kIQ is indicated to aid in the temporary relief of postural and kinetic hand tremor symptoms that impact some activities of daily living the treated hand following stimulation in adults with Parkinson’s Disease.

**Caution:** Federal law restricts this device to sale by or on the order of a physician. Before use, refer to the product labeling for complete product instructions for use, contraindications, warnings, and precautions at [CalaHealth.com/Safety](http://CalaHealth.com/Safety).

Copyright © 2019-2024, Cala Health, Inc. All Rights Reserved. Cala Health, Cala, and Cala kIQ are trademarks of Cala.

MM-20054 REV B